



03 June 2009

Gold and Bauxite Exploration Underway in Cameroon

London, 03 June 2009 - Avance Gold plc ("Avance" or the "Company") the mineral explorer focused on West and Central Africa announces that it has been granted three exploration licences covering approximately 3,000 km² and commenced exploration for gold and bauxite in northern Cameroon.

Highlights

- Three exploration licences granted over approximately 3000 km² in northern Cameroon
- Licences target historic gold occurrences and significant bauxite potential
- Reconnaissance exploration and satellite-borne target generation underway

In April 2009 the Company's 100% owned subsidiary Aucam SARL was granted the Tenkou, Malam and Mandoum mineral exploration licences, each of approximately 1,000km², by the Ministry of Industry, Mines and Technology. The licences are located in the Adamawa region of northern Cameroon (see maps 1 and 2), approximately 30km west of the town of Ngaoundéré and 450km north of Yaoundé the capital city. The Mandoum licence is strategically located between the Minim-Martap and Ngaoundal bauxite occurrences (see map 3) and at least nine separate alluvial gold occurrences were recorded by the BRGM (1980s and 1990s) on the Tenkou and Malam licences (see map 4).

The Company has commenced initial field reconnaissance across all three licences with geological mapping, stream sediment sampling and rock chip sampling underway. In parallel the company is undertaking a programme of satellite-borne remote sensing in order to generate additional targets for follow up ground truthing.

Avance looks forward to investing in the long term exploration and development of the mineral potential of the Adamawa region, with paramount regard to its social and environmental responsibilities.

About the Adamawa region

The Adamawa region borders Nigeria to the west and Central African Republic to the east. It constitutes a plateau ranging from 1,000m to 2,000m elevation with savannah type vegetation

and relatively cool tropical climate (22 - 25 °C) with a rainy season between April and August. The regional city of Ngaoundéré (population 190,000) has strong communication links, being served by a main rail line to Yaoundé, regional airport and network of tarred and laterite roads. The geology of the region is dominated by upper Proterozoic granite, gneissic and metasedimentary belts of Birimian / Eburnean age with Cenozoic volcanics and migmatites.

Bauxite potential of Cameroon

The geology, elevated topography and tropical climate of the Adamawa plateau make it highly prospective for the formation of large economic bauxite deposits. The Minim-Martap and Ngaoundal deposits are subject to exploration and development by Cameroon Alumina Ltd; a joint venture between Hydromine Inc, Hindalco Industries Ltd and Dubai Aluminium Co. As part of the joint venture a feasibility study will be undertaken for the construction of a hydroelectric dam on the nearby Sanaga river enabling bauxite ores to be processed locally. At Edea in the south west of Cameroon, Societe Camérounaise d'Aluminium (Alucam) a joint venture between Rio Tinto Alcan and the government of Cameroon, operates a 90,000 t/y aluminum smelter currently processing bauxite imported from Guinea.

About Avance

Avance is a privately owned exploration company focused on the discovery of economic mineral deposits in West & Central Africa. The Company is managed by an experienced technical team with track records in the discovery and development of mineral deposits in Africa. Further information on the company is available at the Company's website www.avancegold.com.

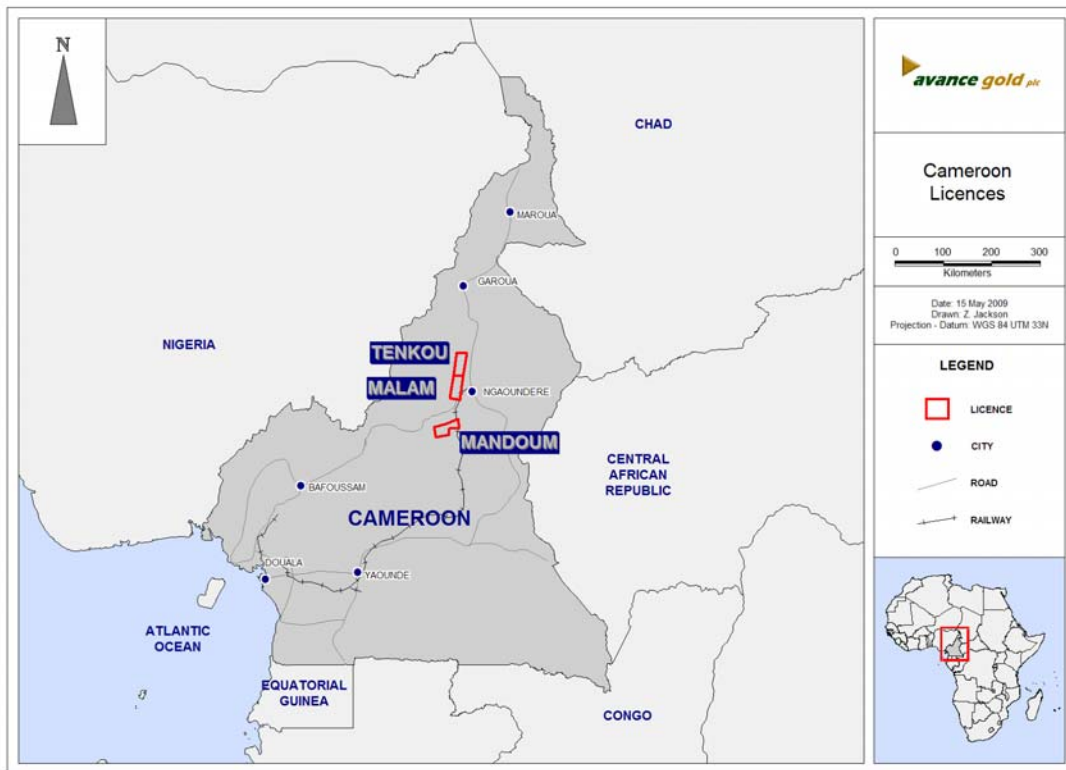
For more information please contact:

Avance Gold plc

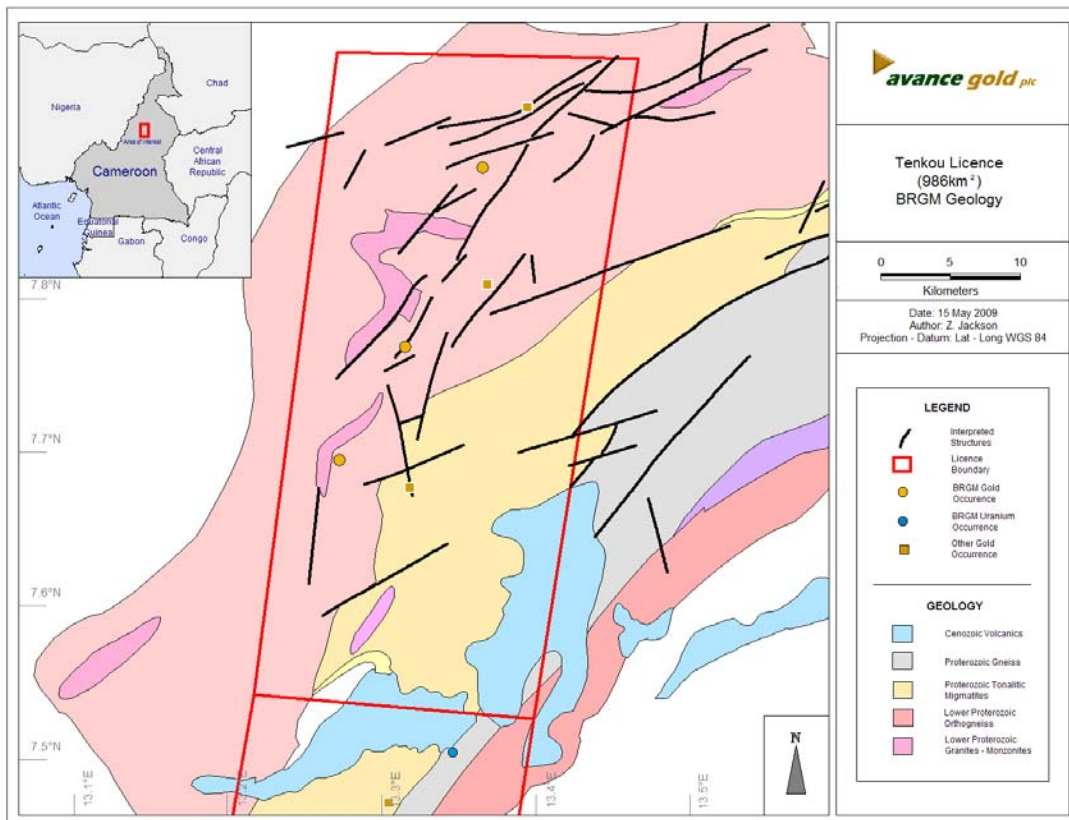
info@avancegold.com

Tel: +44 (0) 1235 511 767

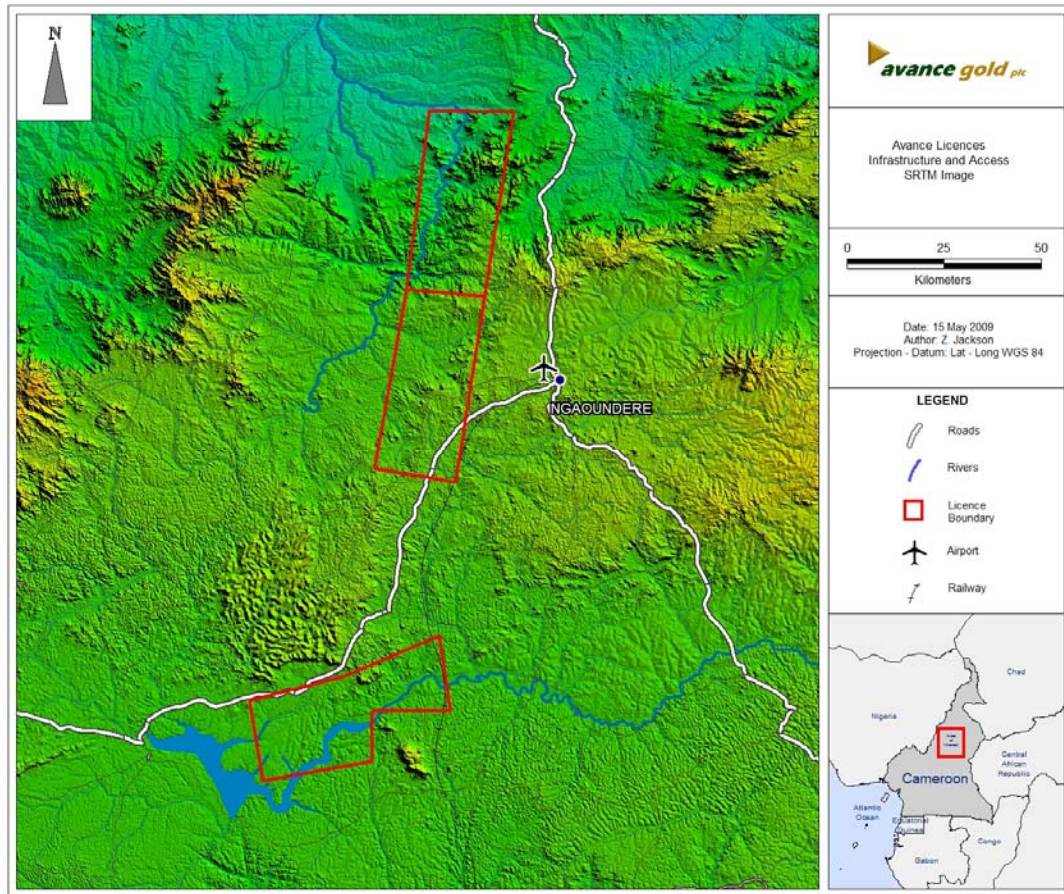
Map: 1 Location of Avance's licences in Cameroon



Map: 2 Detailed location with topography



Map: 3 Proximity of Avance's licences to known bauxite deposits



Map: 4 Geology and gold occurrences on the Tenkou licence

